

Bull's-Eye Broker 5 Beta 1

Quick Start Guide



In this short guide we will show you how to quickly start using Bull's-Eye Broker 5. We will go through the Installation process and the Software Activation process. We will also show you how to open up a Point and Figure chart, as well as a Candlestick chart for Technical Analysis, how to import data from text or CSV files, and how to arrange your charts in tabs.

The official Bull's-Eye Broker 5 installation file is found here:

<http://www.pointandfigure.com/BEB5.exe>

Download this file and perform the installation and activation according to the steps below. If you have any trouble with installing, activating or using Bull's-Eye Broker 5, please visit our support page on <http://www.pointandfigure.com/support/>.

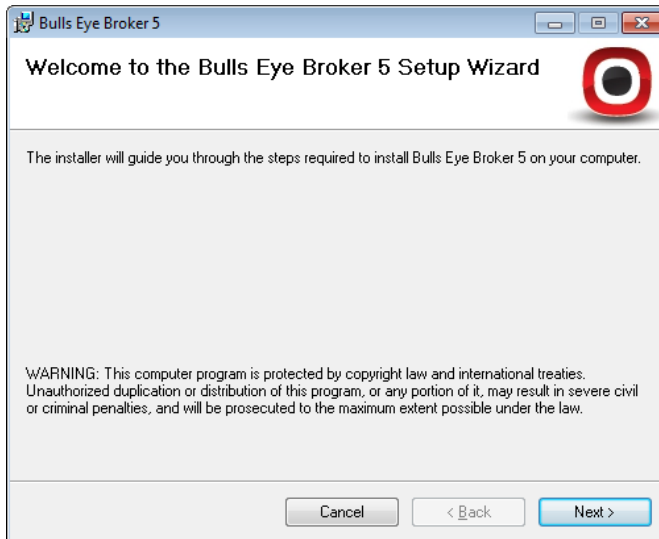
Here you can search the Knowledge Base for previously answered questions, and you can also open a new support ticket if you cannot find a solution to your issue in the Knowledge Base.

Our user support team will answer your support ticket, and you will be informed by email when your ticket has been resolved.

1. Installation

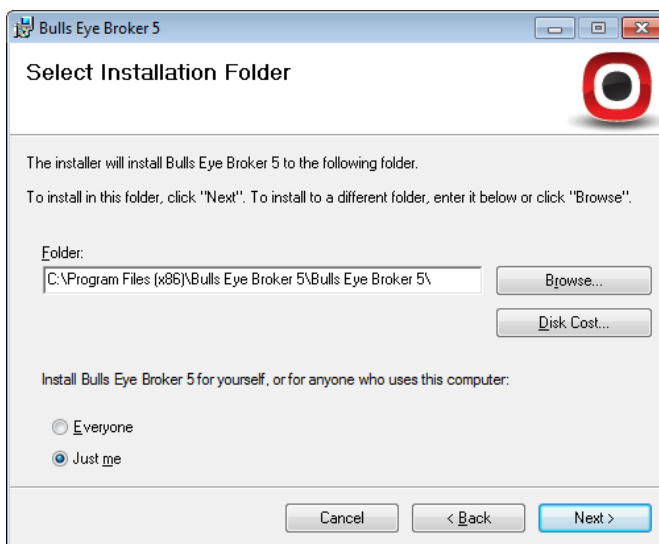
Run the installation file that you have downloaded.

You will get the following screen:



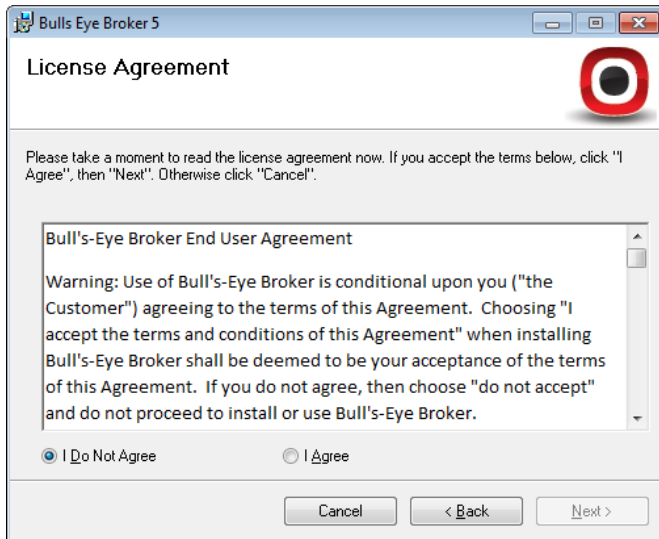
Click "Next".

In the following screen, you can define the location where Bull's-Eye Broker 5 should be installed, or you can simply use the location that the installer suggests. When done, click "Next".

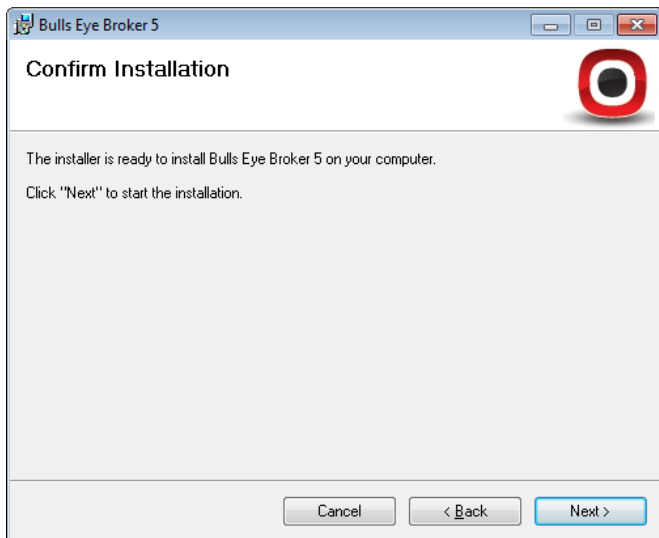


In the following screen you are asked to agree to the license agreement. If you do not agree to the license agreement click "Cancel". If you agree to the license agreement and

want to install and start using Bull's-Eye Broker 5, select “I Agree” and then click “Next”.

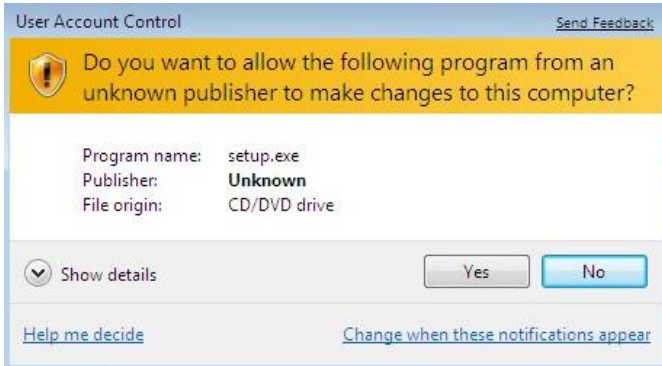


In the following screen click “Next” to start the installation.

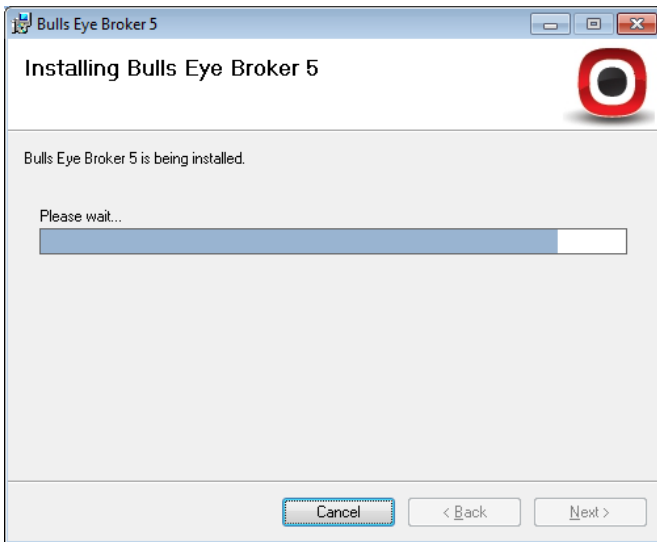


If you are a standard Windows user you are likely to get a “User Account Control” dialog popup asking you to allow the installation. On Windows Vista, Windows 7 and later this is a standard procedure unless you are running your Microsoft Windows as a System Administrator, or if you have disabled the User Account Control.

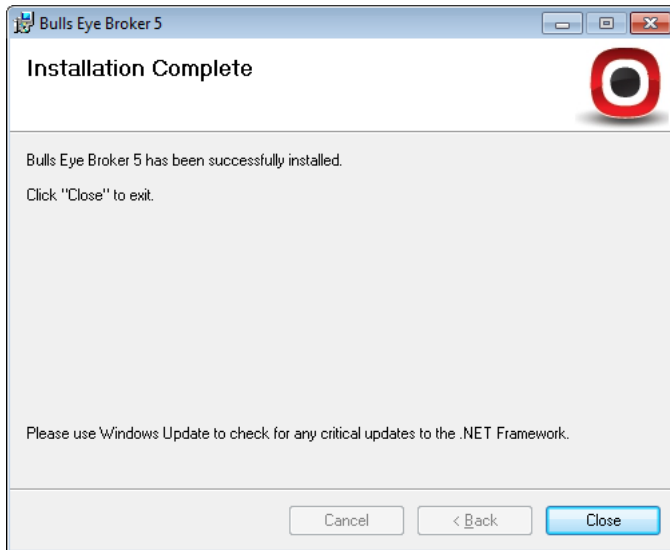
In the User Access Control screen, click “Yes” to perform the installation.



In the next screen you will see the installation progress.



When the installation is complete, you will get the following message. Click “Close” to exit the installation process.

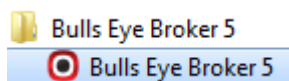


Congratulations! Now your Bull's-eye Broker 5 has been installed on your computer. To run the software go to your Windows start menu and find the Bull's-eye Broker 5 application in your list of installed software.

The Windows start menu is usually found in the bottom left corner of your screen. Your Windows start menu button looks like one of these, depending on your Windows version and the graphical theme that you are using:



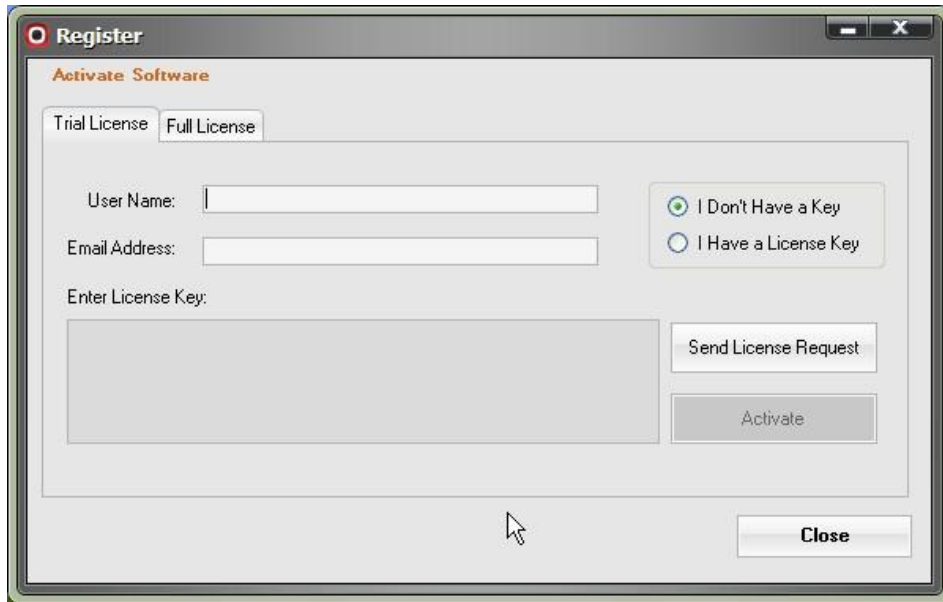
You will find "Bull's-eye Broker 5" program folder and icon inside your start menu, in the "All programs" sub-menu:



Click the program to run Bull's-Eye Broker 5. Do the following steps to activate your Trial license:

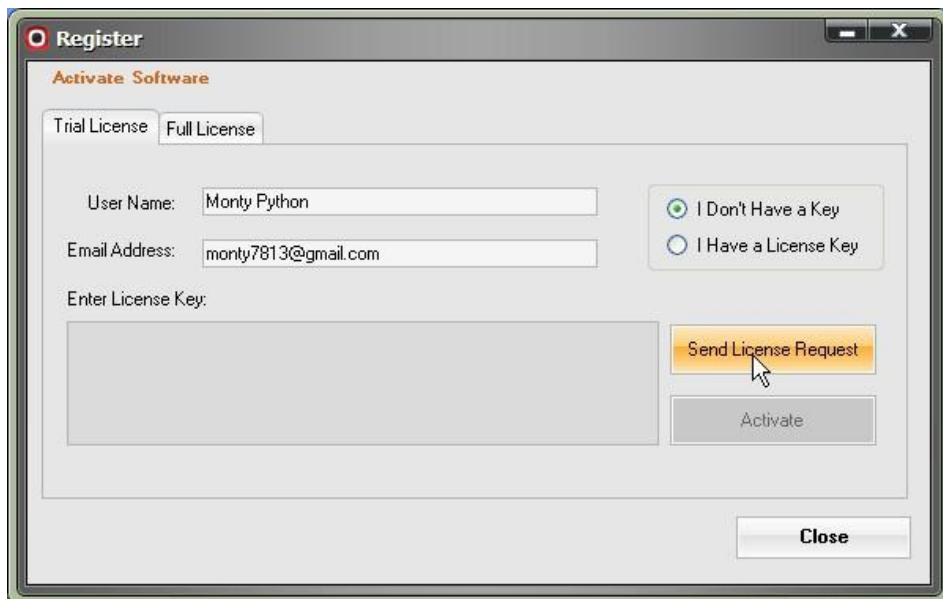
2. Registration & Activation

When you run Bull's-Eye Broker 5 for the first time, Bull's-Eye Broker 5 will display the registration window as shown below:



The screenshot shows a window titled "Register" with a sub-header "Activate Software". It features two tabs: "Trial License" (selected) and "Full License". The form includes fields for "User Name:", "Email Address:", and "Enter License Key:". To the right of the "User Name" and "Email Address" fields are two radio buttons: "I Don't Have a Key" (selected) and "I Have a License Key". Below the "Enter License Key" field is a "Send License Request" button and an "Activate" button. A "Close" button is located at the bottom right of the window.

To get your Trial License Key enter your User Name and Email Address in the corresponding textboxes on the Trial License Tab as shown in the following example:

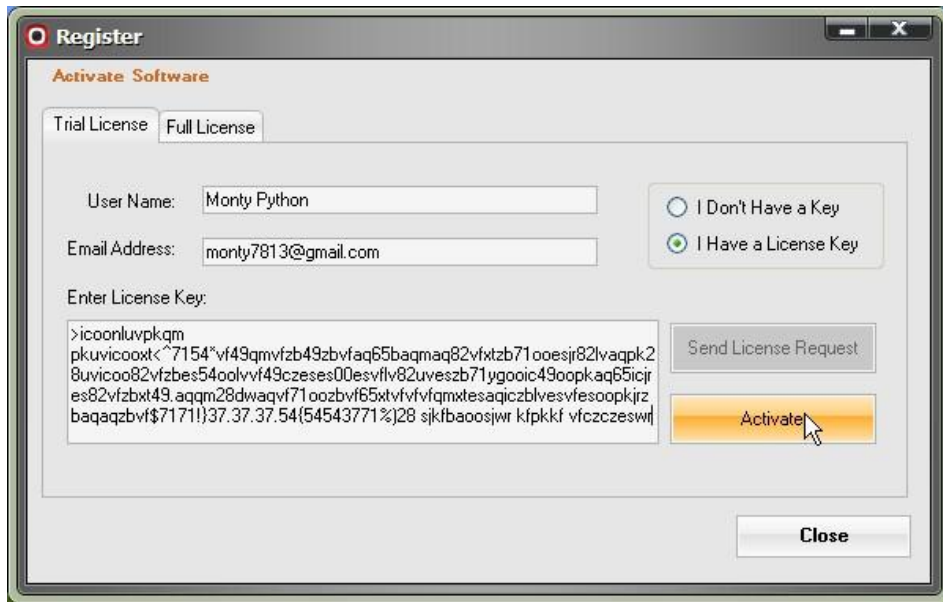


This screenshot shows the same "Register" dialog box, but with the "Trial License" tab selected and the "User Name" field containing "Monty Python" and the "Email Address" field containing "monty7813@gmail.com". The "I Don't Have a Key" radio button remains selected. The "Send License Request" button is now highlighted in yellow, and a mouse cursor is pointing at it. The "Activate" and "Close" buttons are also visible.

Next, left click on "Send License Request" as shown. Now the trial license key will be sent to your email address.

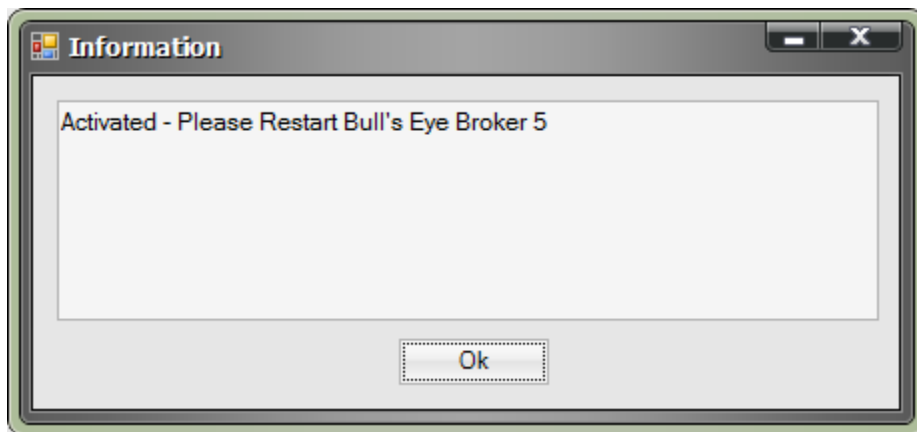
The license key will be a random combination of characters. The email message contains only the license key, so make sure you copy all characters in the email. If you don't know how to copy and paste a selection of text, please refer to Appendix B at the bottom of this document.

Copy the license key received in the email received and paste it in the text box under "Enter License Key" on the Registration window as shown below:



Next click on the activate button.

Now a new dialog box will be shown asking you to restart the application:



Click on OK to close the dialog box and the registration window.

Congratulations! Bull's-Eye Broker 5 is now activated with the trial license key and ready to use. Please restart Bull's-Eye Broker 5 through the Start menu.

3. Point and Figure Charting

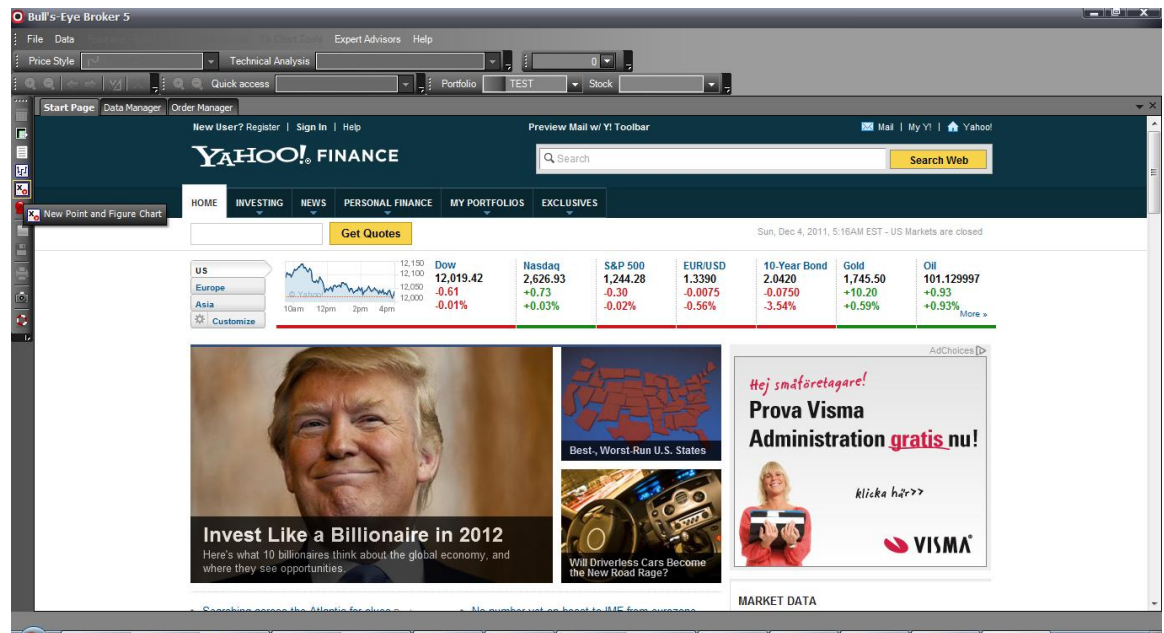
Bull's-Eye Broker 5 comes with FREE stock data provided by Yahoo Finance!

The free Yahoo data source is activated by default, but you can also select other data source like Interactive Brokers or Barchart DDF data source for real time data.

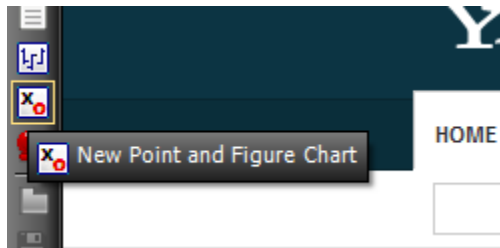
Barchart.com provides data for US-equities, futures, commodities and forex and is the preferred data source for Bull's-Eye Broker 5. Other data sources are secondary and might not provide the same functionality as when using the Barchart.com data feed.

All data services are provided separately by 3rd party data vendors. Barchart.com is the preferred data vendor for Bull's-Eye Broker – for more information please refer to Appendix A.

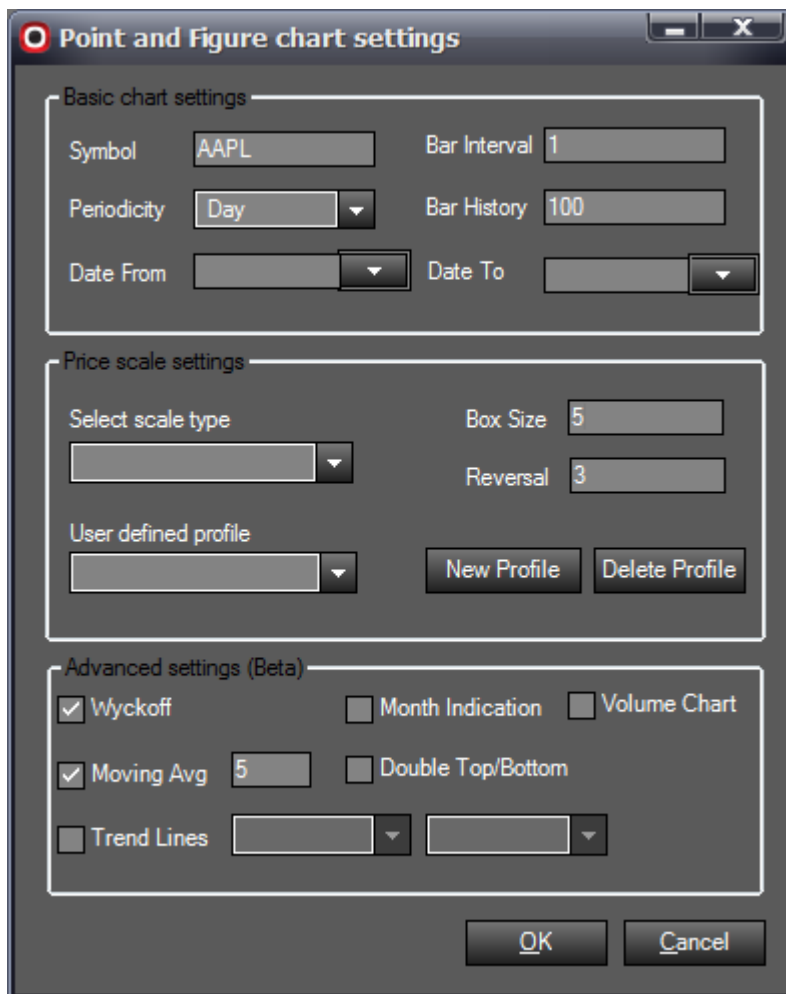
To create a Point and Figure chart click on the 5th icon on the vertical tool bar on the left side in the Bull's-Eye Broker application window as shown in the following screen shots:



The icon is shown here:



This will open a new dialog box as shown below:



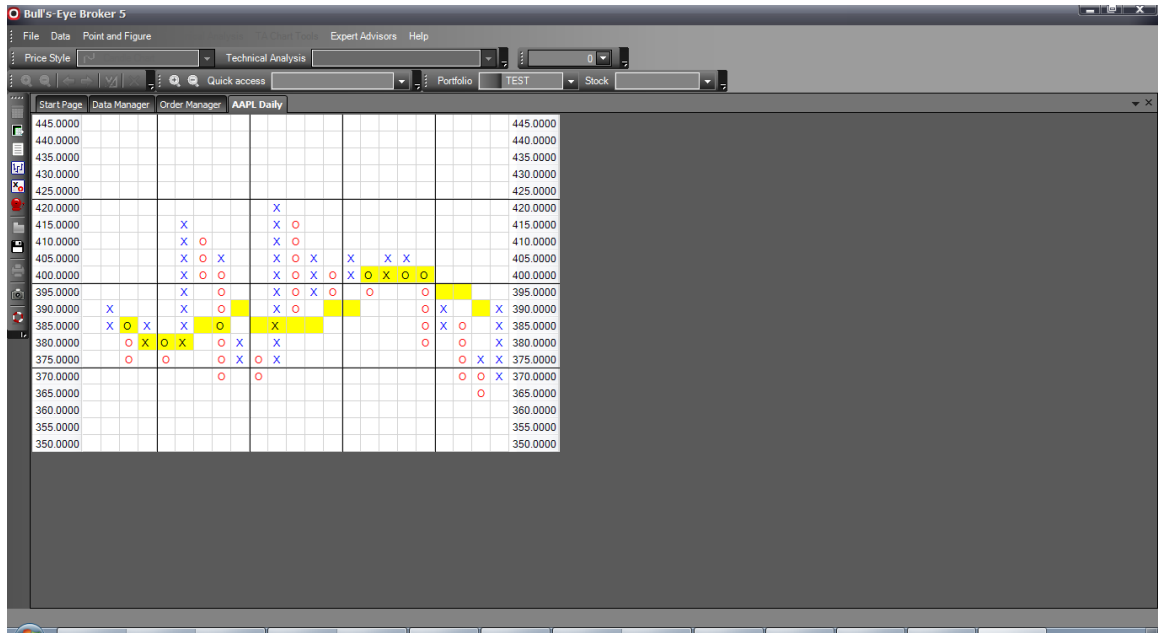
Now in this dialog box, for the basic settings, you can enter the stock symbol for which you want to create a Point and Figure Chart, Bar Interval, Bar History and the periodicity. You can also select the chart duration by selecting Date From and Date To.

You may also set the appropriate Box Size and the Reversal for the Point and Figure Chart in Price Scale Setting.

In the Advanced Setting section you may chose the period for moving average and other options like Wyckoff type of plotting charts, Month Indication, Volume Chart, indicating Double Top/Bottom Pattern and the trend lines. *(Please note that most of these functionalities will be improved and further developed in the near future, in this Beta version we have decided to release only limited and rudimentary extra functionality apart from Real-Time charting and standard Point and Figure charts)*

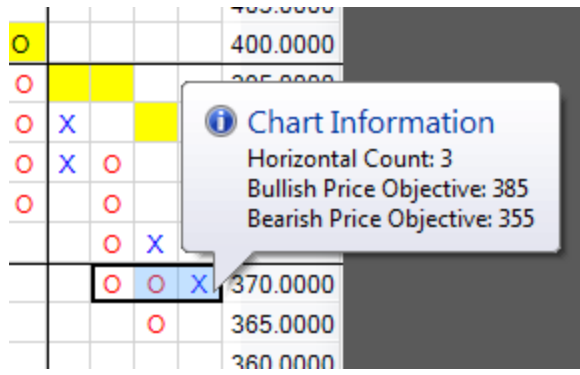
In the example screen shown above, the settings for plotting Point and Figure Chart for AAPL symbol with Box Size of 5 and Reversal of 3, based on EOD price quotes for the duration April 1, 2011 to November 30, 2011.

After setting the required parameters click on OK. Bull's-Eye Broker will create the Point and Figure Chart as shown below:



The yellow boxes indicate the moving average (5 MA).

To view the horizontal price objective, select the X's and O's in the row (According to the count guide) by clicking and dragging the mouse as shown in the following example. This will give you a tooltip with information about the count and the Price Objectives.



Similarly, vertical price objective can be shown by selecting X's or O's in the required vertical column by clicking and dragging the mouse.

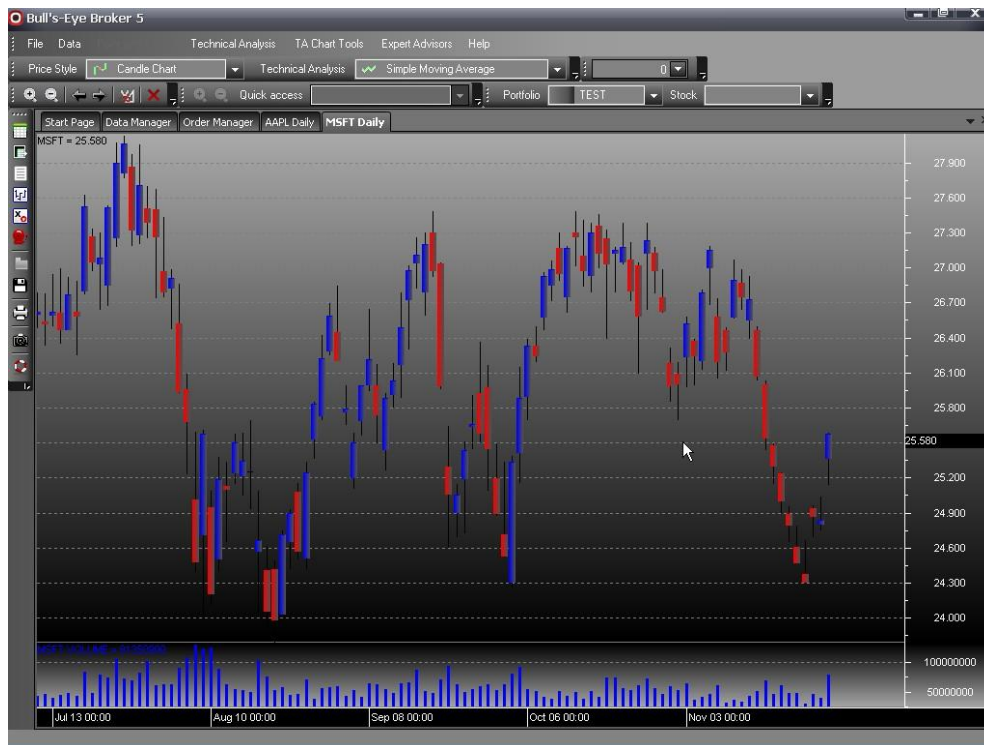
4. Candle Stick Charts

For creating candle stick chart in Bull's-Eye Broker 5, click on the 4th icon in left vertical toolbar of Bull's-Eye Broker 5, beneath the Point and Figure icon in the previous example. This will open a dialog box as shown in the following example:

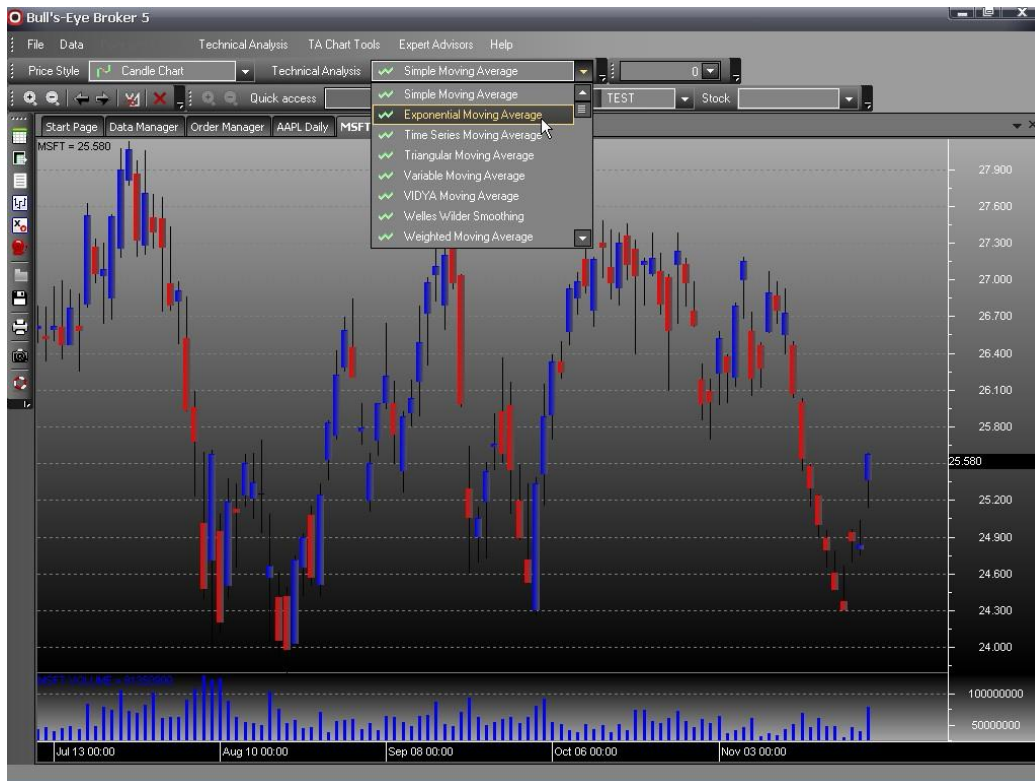


In this dialog box you can enter the required Symbol, Bar Interval, Periodicity, Bar History or the duration of time to chart. Duration can be selected by selecting Date From and Date To from the respective Calendar Drop Down boxes. In the above example the settings are shown for plotting the Candle Stick Chart for Microsoft Corporation (i.e. MSFT symbol).

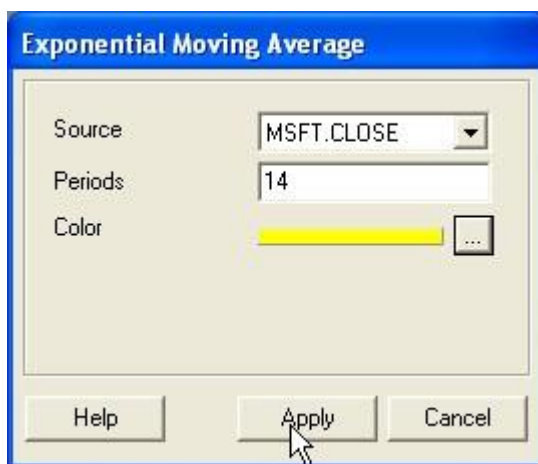
Next, by clicking on OK button on Chart Setting dialog box we get the Candle Stick Chart for Microsoft Corporation as shown in the following screen shot:



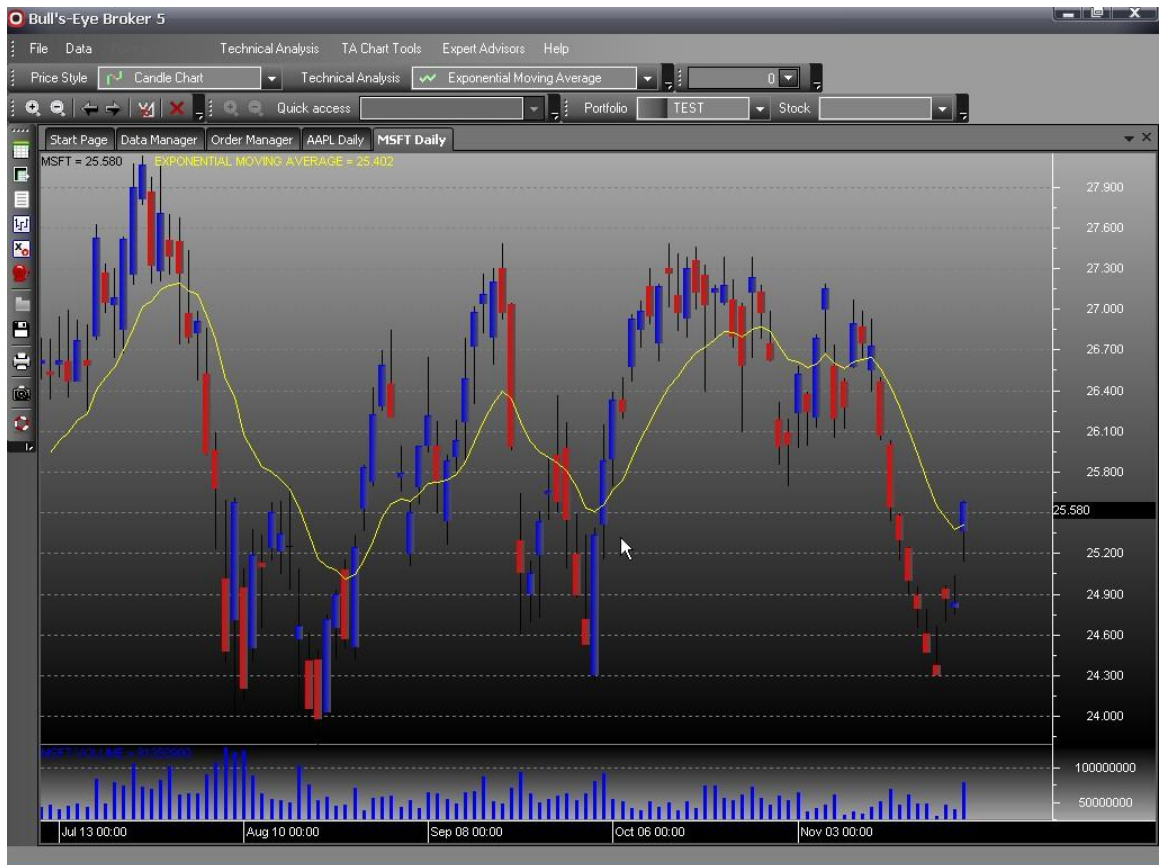
Now you can also add various Technical Analysis studies to this basic candle stick chart by selecting appropriate type of option from Technical Analysis Drop Down List on the Top Tool Bar, as shown in the following example:



In this example we have chosen Exponential Moving Average. This opens up the setting box for the selected Technical Analysis parameter, e.g. in this case the setting box for Exponential Moving Average as shown below;



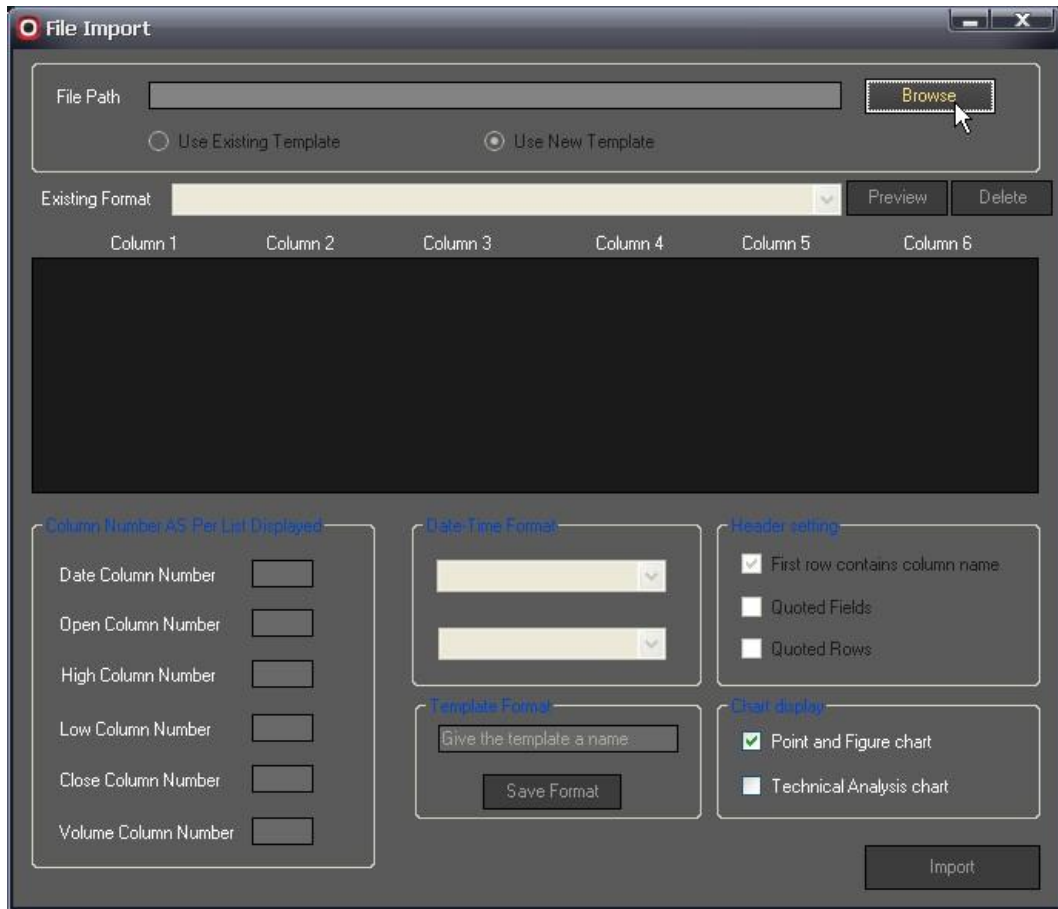
Here in this dialog we have chosen the source as closing price of the stock, period as 14 and yellow color for the Exponential Moving Average, applying which results in the following chart in Bull's-Eye Broker 5:



Please note that you may simultaneously open many charts, either Point and Figure or Candle Stick Charts or both in the different tabs in Bull's-Eye Broker 5.

5. Importing Data From CSV Files

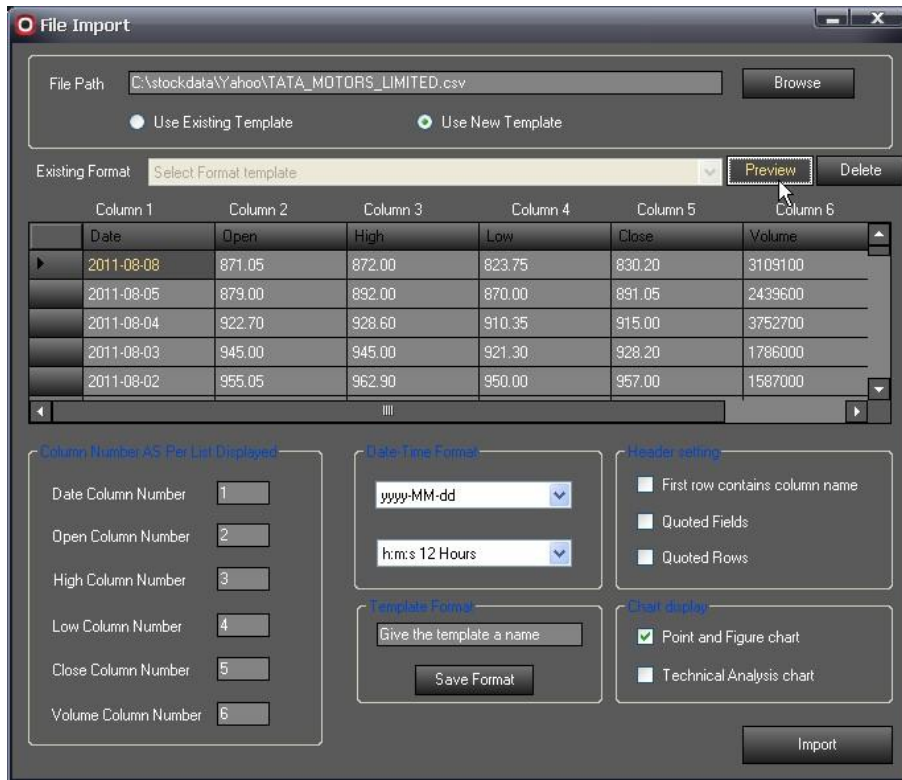
In Bull's-Eye Broker 5 you may also import the stock quotes data from text files, ASCII or comma separated i.e. CSV data files. For importing the stock data from a text file click on the 3rd icon on the left vertical toolbar in Bull's-Eye Broker 5. This will open a new CSV import window in Bull's-Eye Broker 5 as shown in the following example.



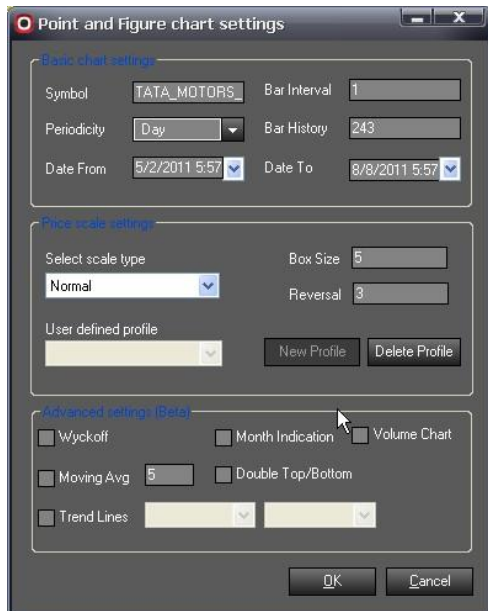
For importing data files first select the text/CSV file to be imported by clicking on browse button. Now you can preview the CSV file data by clicking on the Preview button on File Import Dialog as shown in the following example for Tata Motors Stock. This will automatically suggest the needed settings. Please review the automatically defined settings.

In order to save the settings as a template for quick re-use, you can assign a name to this template in Template format section and save the template for future use by clicking on Save Format button.

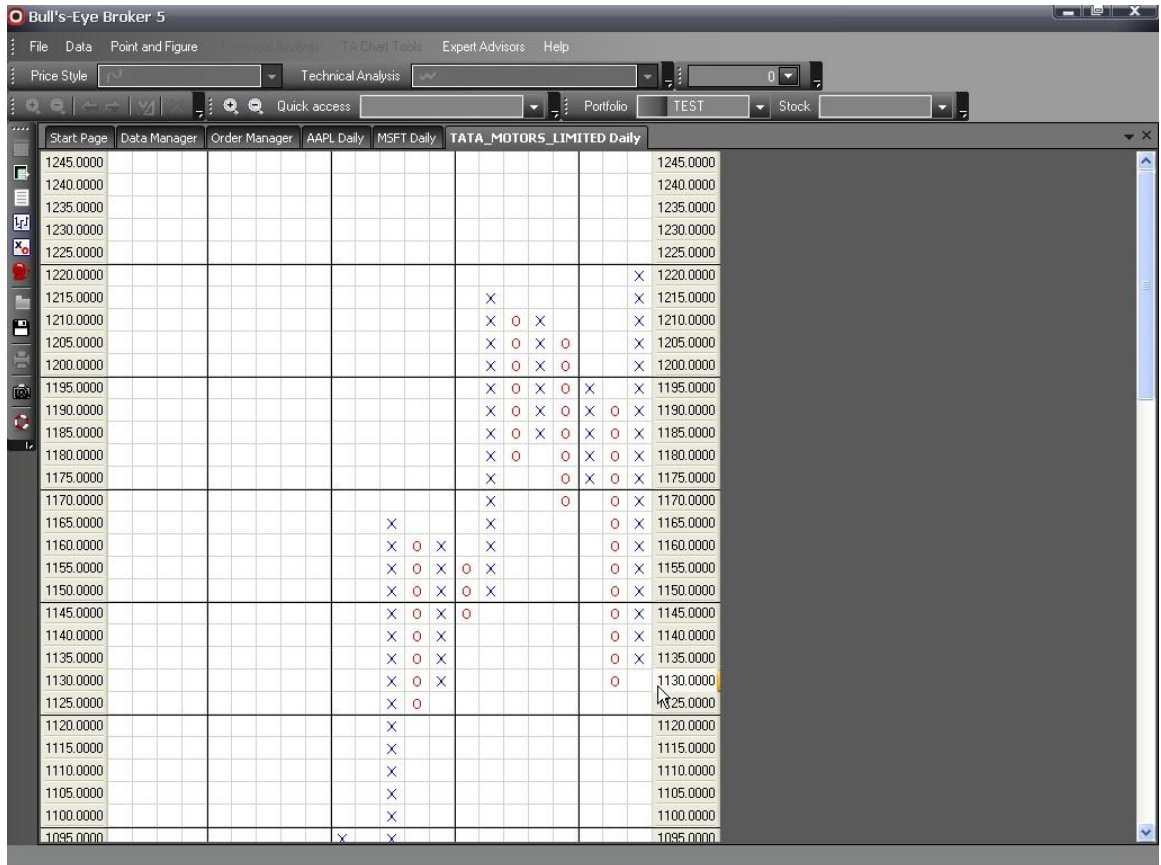
For importing data and creating a new template, make sure the appropriate information corresponding to various columns (and their respective number in the CSV file) in Colum Number As Per List Displayed section. Also choose the appropriate Date Time Format in the Date Time Format section.



To open the chart select the type of Chart in the Chart Display section, I.e. Point and Figure or Technical Analysis chart. Now to import the data click on Import button. For Point and Figure this will display a new dialog box for a Point and Figure Chart as shown below:



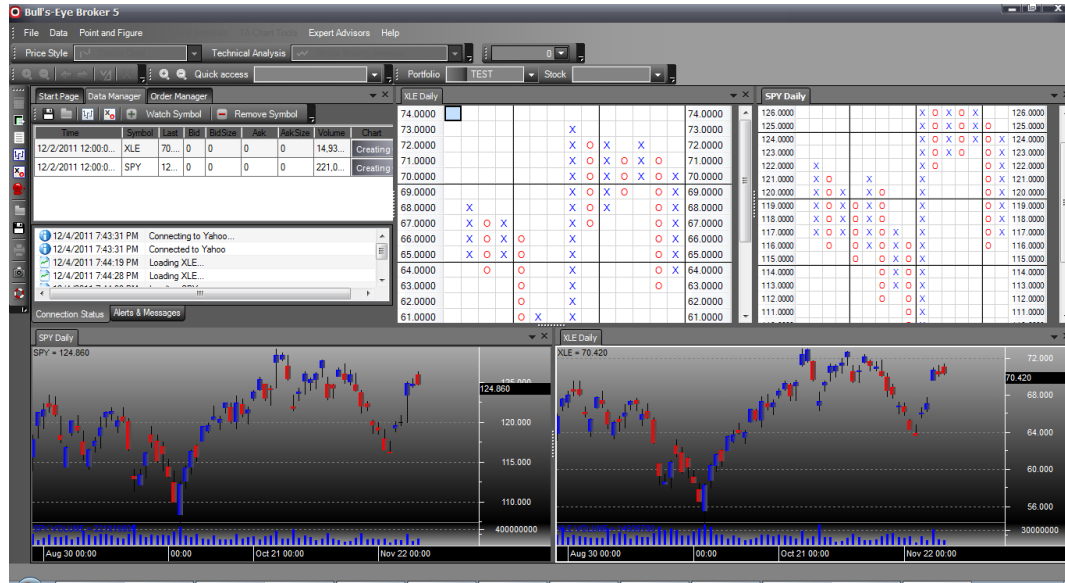
The settings on this dialog box are as explained in the section on Point and Figure Charting in this Quick Start Guide. Now click on OK to view the Point and Figure Chart in the new tab as shown in the following example.



This completes the import of CSV data into Point and Figure Charts.

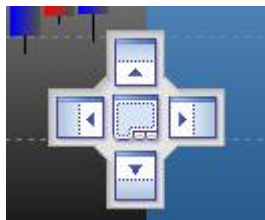
6. How to arrange the charts in tabs

New in Bull's-Eye Broker 5 is the possibility to open charts in different tabs. This also allows you to arrange the tabs, in order to simultaneously show several charts in your application window, e.g. simultaneously show a few or several Point and Figure charts and Candlestick charts/bar charts/Technical Analysis charts.



To arrange the chart tabs, click the tab with your left mouse button and while keeping your mouse button pressed down, drag the tab to the left, the right, the top or the bottom of the tab arrangement tool which will appear on the screen.

Drag the tab over this tool, and release it where you like, the top, bottom, left or right.



The actual chart location will be indicated in blue when you drag the mouse to the part of the screen where you want to place your chart tab. When you want to release the chart tab in the selected location you simply release the mouse button.

Appendix:

A. How to sign up for Real-Time data with FREE trial:

Bull's-Eye Broker 5 supports real time data in tick format. We have partnered up with one of the leading data vendors - Barchart.com – to provide our customers the best real-time data at the most reasonable price in the business. Barchart.com provides data for US-equities, futures, commodities and forex and is the preferred data source for Bull's-Eye Broker 5. Other data sources are secondary and might not provide the same functionality as when using the Barchart.com data feed.

Barchart.com of course also provides historical intraday (by tick, minute, hour) and EOD data in the same low-priced data package making this an unbeatable offer. The quality of the data feed is world class.

To start receiving Real-Time data in Bull's-Eye Broker 5 use the following link, and please make sure that the user name you select begins with PA:

<https://www.barchart.com/register/realtime/?ID=PAF>

Please note, Barchart.com provides partial month FREE trials.

If you sign up on the 2nd of the month then Barchart.com provides the rest of the month as a trial period and will start billing on the 1st of the next month.

This means that you can test run Real-Time data for FREE during the trial period. We recommend that you to sign up for the FREE Real-Time data at the same time as you run your Trial period of Bull's-Eye Broker 5. Please note the partial month trial period of Barchart.com.

To cancel the Barchart.com subscription you can simply send an email with your username and the word "cancel" in the subject to realtime@barchart.com before the first of the next month. Then you are not billed for the data.

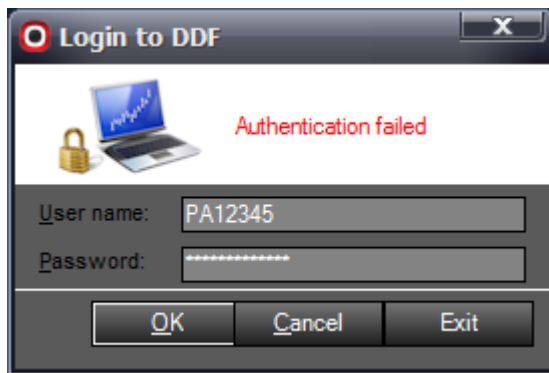
To start receiving Real-Time data in Bull's-Eye Broker 5 use the following link, and please make sure that the user name you select begins with PA:

<https://www.barchart.com/register/realtime/?ID=PAF>

After you have received confirmation that your Barchart.com account is active, run Bull's-Eye Broker 5 and go to menu "Data" then "Connections" and select "DDF" as shown below:



Then enter your Barchart.com username and password.



You will now receive the data from Barchart.com

B. How to perform a copy/paste operation in Microsoft Windows:

In order to automatically copy and paste the license key into Bull's-Eye Broker 5 you can use this simple routine, instead of typing the license key manually.

Take your mouse, and place your cursor at the beginning of the text in the License Key email. I.e. place the cursor just left of the first character in the license key. Click and hold the left mouse button, and pull your mouse over the text all the way to the last character of the license key. This will highlight the text.

Now release the left mouse button.

Now, there are two alternatives for copying the text into your computer's memory.

Alternative 1: with the cursor placed over the highlighted text, right click the mouse for a popup list of options, and select 'copy'.

Alternative 2: while the text is highlighted – hold down the Control key on your keyboard and press the C-character on your keyboard. Control key often have the text “Ctrl” and is usually found in the bottom left corner.

After having performed one of these alternatives the license key should be stored in your computer’s memory.

Now go back to the Bull’s-Eye Broker 5 registration window and paste the license key. There are two alternatives for pasting the license key:

Alternative 1: with the cursor placed over the box with the header “Enter License Key”, right click the mouse for a popup list of options, and select 'paste'.

Alternative 2: click the box with the header “Enter License Key” with your left mouse button. Then hold down the Control key on your keyboard and press the V-character on your keyboard. Control key often have the text “Ctrl” and is usually found in the bottom left corner.

When the license key has been pasted into the field, click the button “Activate”.